

Warewashing

Small Insulated Double Skin GW, WSC, electronic, drain pump, detergent & rinse aid dispensers, 30b/h

ITEM # _____

MODEL # _____

NAME # _____

SIS # _____

AIA # _____



402230 (ESDIAG)

Glasswasher (small), with WASH-SAFE CONTROL, insulated double skin, electronic control, built-in drain pump, detergent and rinse aid dispensers, 3 cycles, 30b/h

Short Form Specification

Item No. _____

Unit shall be green&clean Glasswasher type hot water rinsing using rack dimension of 400*400mm with WASH SAFE CONTROL. Electrical characteristics to be 230 volts single phase 50Hz operation. Washing performance is ensured by a powerful wash pump, revolving washing spray arms both from bottom and top. 84°C rinse temperature and constant pressure are guaranteed by built-in atmospheric boiler. Unit to feature "WASH SAFE CONTROL" led light. Green light will indicate that all items washed have been properly rinsed. Three automatic cycles of 120/ 300/ 120 seconds suitable for glasses and small plates/ saucer. Double skin counter-balance door. Large door opening of 290mm for washing tall glasses. Insulated double skin cabinet. Pressed tank with round corners. 304 stainless steel construction to include door, frame, wash tank, tank filter, wash arms and rinse arms. Electronic control with temperature display. The unit shall include drain pump, detergent and rinse aid dispenser pumps and is equipped with electric cable and Schuko plug.

Main Features

- Incorporated Soft Start feature to offer additional protection to more delicate items.
- Constant temperature of 84 °C throughout the rinsing cycle regardless of the network's water pressure and temperature.
- Built-in rinse aid and detergent dispenser with automatic initial and continuous cycle loading for perfect result while minimizing service and maintenance needs.
- Deep drawn pressed wash tank with fully rounded corners, sloped towards the drain to prevent dirt build up provides fast drainage in only a few minutes. Pressed wash tank with no welded points offer a guaranteed water tight solution.
- Double skinned insulated wall ensures a low noise level and a reduction in heat loss from the machine.
- Green light of "WASH SAFE CONTROL" confirms that items have been rinsed properly.
- Low noise level.
- Equipped with drain pump for easy and quick installation without opening the machine.
- Built-in atmospheric boiler sized to raise incoming water to 84 °C minimum for sanitizing rinse. No external booster is required.
- Maximum capacity of 30 racks per hour.
- Equipped with single phase electrical cable and Schuko plug for easy and fast installation.
- Washing system endowed with rotating washing arms from both top and bottom, high powered wash pump and large capacity wash tank guarantee professional washing.
- Easy service access to main components without moving the unit.
- New electronic control panel for easy setup of the working parameters and self diagnosis.

Construction

- Completely closed on the back by a cover plate.
- Unit to feature rinse aid and detergent dispenser pumps.
- Wash/rinse arms and nozzles in stainless steel.
- Finished in top quality stainless steel with double skinned construction to aid durability and reduce noise.
- Internal components (arms and filter) are easy extractable.
- Large tank filter collects the soil to keep the wash water clean for a longer time and have better washing performance.
- 304 AISI stainless steel front panel, load bearing frame, wash tank, tank filter, wash and rinse arms.

Sustainability

- Insulated double skin door construction preserves heat inside the tank to lower energy consumption and the noise. Counter-balance mechanism minimizes impact when opening and closing.

APPROVAL: _____

Included Accessories

- 1 of Stainless steel tank filter PNC 864003
- 1 of Square basket for glasses 400x400x150mm PNC 864470

Optional Accessories

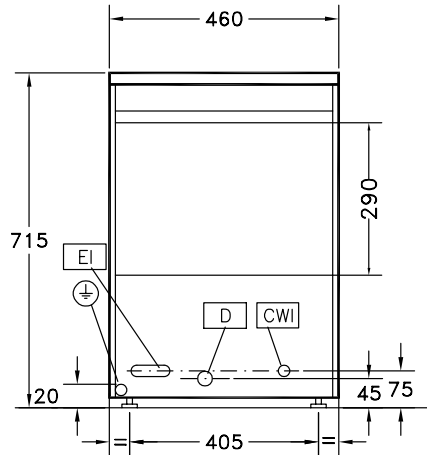
- Filter for partial demineralization PNC 864017 ☐
- Kit to measure total and partial water hardness PNC 864050 ☐
- Rinse booster pump kit for single tank pressure dishwasher PNC 864051 ☐
- Yellow cutlery container PNC 864242 ☐
- Filter for total demineralization PNC 864367 ☐
- External reverse osmosis filter for single tank Dishwashers with atmosphere boiler and Ovens PNC 864388 ☐
- Pressure reducer for single tank dishwasher PNC 864461 ☐
- Kit 4 plastic boxes for cutlery - yellow PNC 865574 ☐
- Cover rack for small and light items (500x500 baskets) PNC 867016 ☐
- Basket for glasses (395x395x115) PNC 867033 ☐
- Insert for 12 saucers, 290X90x75mm PNC 867048 ☐
- Basket for 16 plates diam.190 mm, 8 plates diam. 240 mm PNC 867052 ☐
- Basket for glasses (h 100 mm) PNC 867053 ☐
- Basket for glasses (h 200 mm) PNC 867054 ☐
- Basket for glasses and saucers/ cutlery inserts PNC 867055 ☐
- Basket for glasses with angled base PNC 867056 ☐
- Round basket kit with square frame PNC 867057 ☐
- Insert for "flute" glasses PNC 867058 ☐
- Insert for 14 saucers PNC 867060 ☐
- Inclined insert for cups PNC 867061 ☐
- Insert for 7 plates d. 240mm PNC 867062 ☐



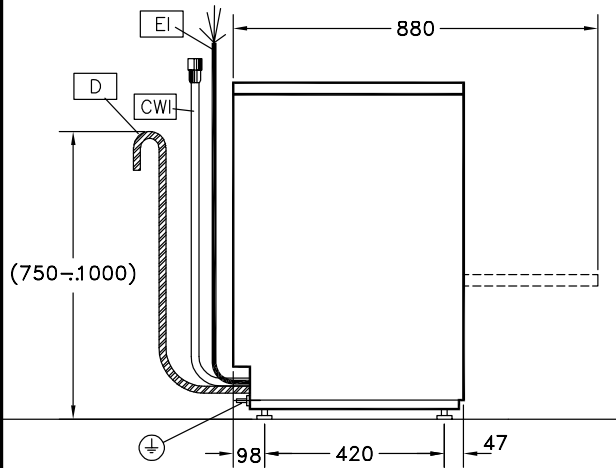
Electrolux
PROFESSIONAL

Warewashing
Small Insulated Double Skin GW, WSC,
electronic, drain pump, detergent & rinse aid
dispensers, 30b/h

Front



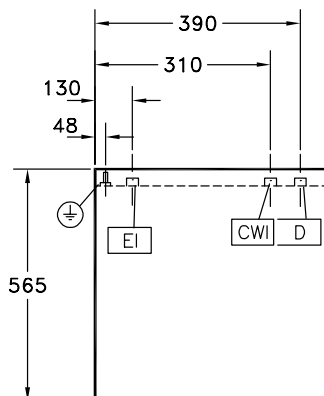
Side



CWI1 = Cold Water inlet 1
(cleaning)
D = Drain
EI = Electrical inlet (power)
EO = Electrical Outlet
WI = Water inlet
XD = Detergent connection

XR = Rinse aid connection

Top



Electric

Supply voltage:	220-240 V/1 ph/50 Hz
Default Installed Power:	3.3 kW
Boiler heating elements:	3 kW
Tank heating elements:	0,8 kW
Wash pump size:	0.3 kW

Water:

Pressure, min-max:	1.8-3 bar
Water supply temperature*:	10-55 °C
Drain line size:	27mm
Washing tank capacity (lt):	6
Water consumption per cycle (lt):	0 / 0
Boiler Capacity (lt):	5
Incoming water line size:	G 3/4"

Key Information:

Wash temperature:	55-65°C
Cell dimensions - width:	400 mm
Cell dimensions - depth:	400 mm
Cell dimensions - height:	290 mm
Rinse temperature:	80-90 °C
External dimensions, Width:	460 mm
External dimensions, Depth:	565 mm
External dimensions, Height:	715 mm
Net weight:	37 kg
Shipping weight:	50 kg
Shipping height:	880 mm
Shipping width:	620 mm
Shipping depth:	500 mm
Shipping volume:	0.27 m ³
Productivity, baskets/h:	30
Productivity, dishes/h:	0
Working cycle, sec:	120/180/300

Sustainability

Noise level:	61 dBA
--------------	--------



Warewashing
Small Insulated Double Skin GW, WSC, electronic, drain pump,
detergent & rinse aid dispensers, 30b/h
The company reserves the right to make modifications to the products
without prior notice. All information correct at time of printing.

2025.07.16